



AQUA

EPTAINKS

## TOPICS

- WHY PRINTING WITH WATER-BASED INKS
- INK FEATURES
- COMPARISON WITH PLASTISOL INKS
- AQUA – STRONG POINTS
- AQUA RANGE
- AQUA AUXILIARIES
- COMPATIBLE PIGMENTS





## WHY PRINTING WITH WATER-BASED INKS

- They enable to achieve prints complying with the most severe restrictions in terms of ecology and safety for the users.
- They allow to achieve prints with different kinds of touch.
- Water-based printing can be made with a simple equipment.
- They make possible to print on substrates, that are sensitive to high temperatures.

# INKS CHARACTERISTICS

## Advantages for the environment

WATER-BASED INK

PVC-FREE

PHTHALATES-FREE

FORMALDEHYDE-FREE AND  
FORMALDEHYDE LOW CONTENT

HEAVY METAL AND APEO FREE

## Printing features

HIGH STABILITY IN THE SCREEN

HIGH ELASTICITY

SOFT TOUCH

BRIGHT COLOURS



# COMPARISON WITH PLASTISOL INKS

0 = min  
5 = MAX

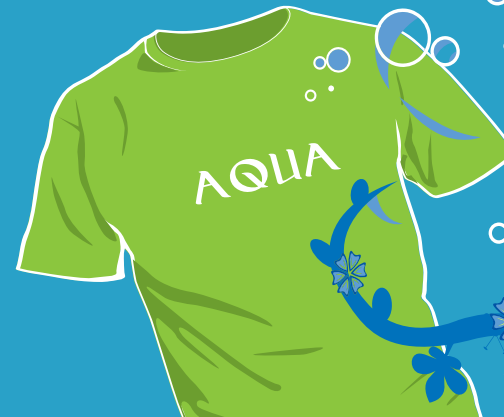
### PLASTISOL

OPACITY	4
TOUCH	3
IRONING	0
PRINTABILITY	5
DURABILITY*	3
ELASTICITY	4

### AQUA

OPACITY	4
TOUCH	5
IRONING	5
PRINTABILITY	4
DURABILITY*	5
ELASTICITY	5

\* DURABILITY = AFTER 50 WASHING, NO "CRACKING" OF THE PRINT CAN BE NOTED





## STRONG POINTS

### ECOFRIENDLY

PVC FREE

COMPLIES WITH THE MOST  
RESTRICTIVE ECOLOGICAL  
STANDARDS

These features are a great  
advantage for ink manufacturers,  
for printers and for those who are  
wearing this product.

### EASY TO USE

HIGHEST STABILITY  
IN THE SCREEN

These features assure excellent  
printability, supporting the  
printers work.

## AQUA RANGE

### TRANSPARENT

AQUA  
TRANSPARENT

AQUA SOFT  
TRANSPARENT

LIGHT FABRIC

### WHITE

AQUA WHITE

AQUA FLASH  
WHITE

AQUA OPAQUE  
WHITE

DARK FABRIC

### COLOURED

AQUA BASE

AQUA  
COLOURS

### FASHION EFFECTS

AQUA GOLD

AQUA SILVER

AQUA BINDER PG

AQUA PUFF



# ADVANTAGES FOR THE ENVIRONMENT

## OEKO-TEX®

A free certification system, which is “worldwide” recognized by the international textile world, examining the production cycle for the manufacturing of the article in its wholeness: from raw materials to finished products during all processing phases. The certification system applies to all textile products and toys made of fabric.

## OEKO-TEX®: THE WORLD WIDE TEXTILE STANDARD

The certification system applies to:

1. **FINISHED GARMENT:** Oeko-Tex® Standard 100
2. **PROCESS AND PRODUCTION SITES:** Oeko-Tex® Standard 1000
3. **BOTH:** Oeko-Tex® Standard 100 Plus

CERTIFICATIONS ARE ALWAYS AND EXCLUSIVELY  
REFERRED TO THE ARTICLE.

IT IS NOT POSSIBLE TO CERTIFY SUBSTANCES  
OR PREPARATIONS





# ADVANTAGES FOR THE ENVIRONMENT

## OEKO-TEX®: APPLICATION FIELDS & NORM SPECIFICATIONS

The Oeko-Tex® Standard 100 refers to articles and states that: the more a finished garment is in contact with the skin – considering its sensitivity –, the more restrictive are the limits imposed by the standard. The classes listed in the Regulations are four, like the threshold values of interest:

### CLASS I

To this class belong textiles and textile toys designed for children up to 3 years. Some articles included in this class are: underwear and bed linen, rag dolls and so on.

### CLASS II

To this class belong textile products having a large part of their surface in direct contact with the skin; they are designed for children above 3 years as well as for adults. Some articles included in this class are: underwear and bed linen, towelling articles in direct contact with the skin and wearing apparel such as T-Shirt and shirts.

### CLASS III

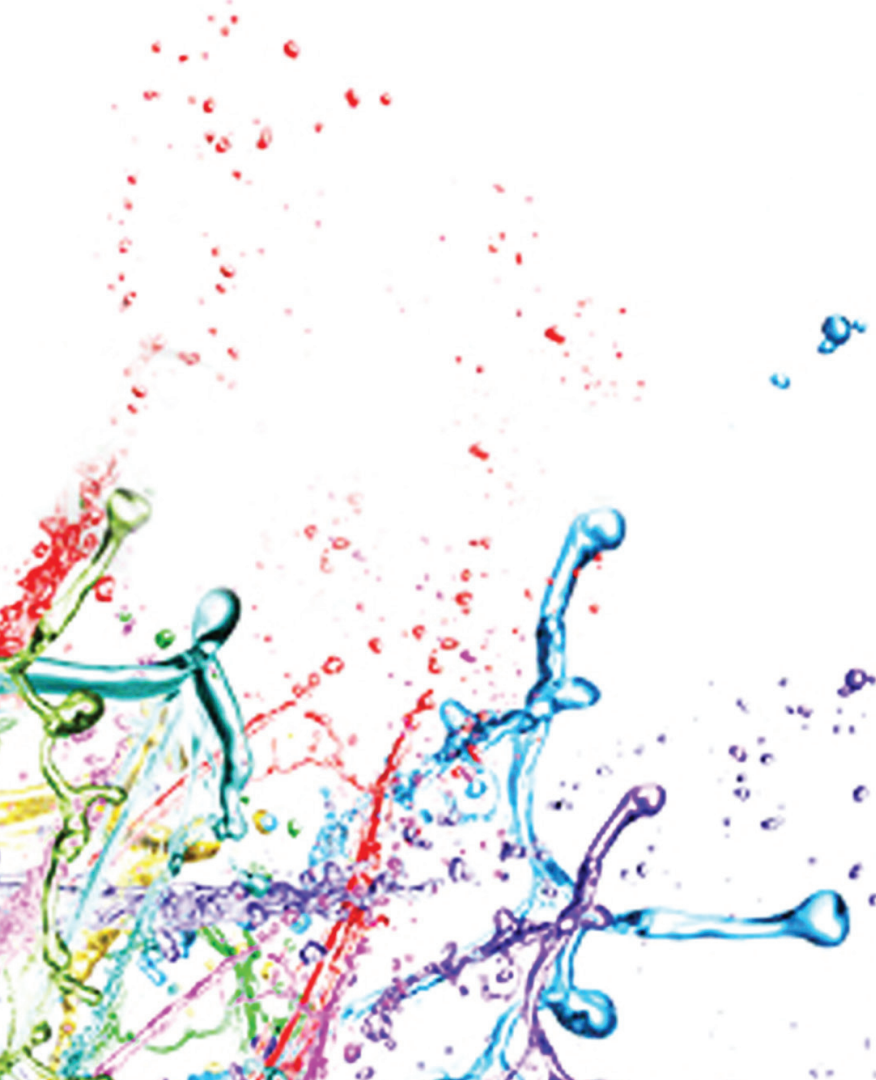
To this class belong textile products that are not in direct contact with the skin or are in contact with a small area, such as coats and jackets.

### CLASS IV

To this class belong textile products designed for Interior Decoration such as wall paper, furnishing fabric, table linen, carpets and wall coverings.



### AQUA RANGE TRANSPARENT INKS



#### AQUA TRANSPARENT

**Where?**

INK FOR LIGHT SUBSTRATES

**How?**

PRINTABLE WITH MESH UP TO  
120 THREADS/cm

**Why?**

BRIGHT COLOURS  
HIGH ELASTICITY  
EXCELLENT PRINTABILITY

#### AQUA SOFT TRANSPARENT

**Where?**

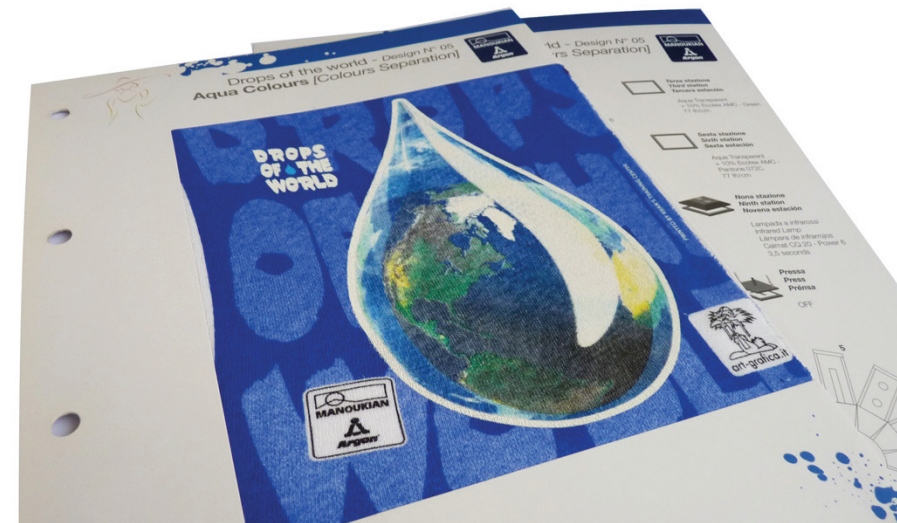
INK FOR LIGHT SUBSTRATES

**How?**

PRINTABLE WITH MESH UP TO  
100 THREADS/cm

**Why?**

GOOD PRINTABILITY  
BRIGHT COLOURS  
HIGH ELASTICITY  
SOFT AND VELVETY TOUCH



# AQUA RANGE

## WHITE INKS

### AQUA WHITE

**Where?**

ELASTIC WHITE INK FOR DARK SUBSTRATES

**How?**

PRINTABLE WITH MESH UP TO 100 THREADS/cm

**Why?**

GOOD PRINTABILITY

HIGH ELASTICITY (suitable for LYCRA)

### AQUA FLASH WHITE

**Where?**

WHITE INK FOR PRINTING OF "BACKGROUNDS"

**How?**

PRINTABLE WITH MESH UP TO 77 THREADS/cm

**Why?**

GOOD PRINTABILITY

FAST FLASH DRYING

SOFT AND VELVETY TOUCH

### AQUA OPAQUE WHITE

**Where?**

WHITE INK FOR PRINTING ON DARK SUBSTRATES

**How?**

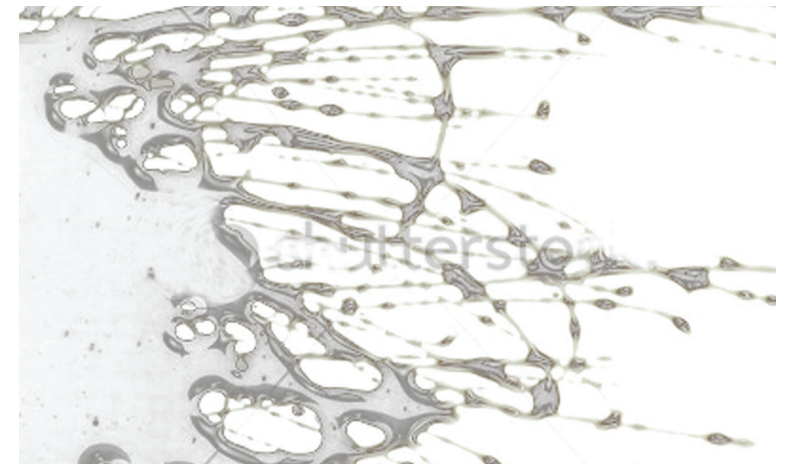
PRINTABLE WITH MESH UP TO 77 THREADS/cm

**Why?**

GOOD PRINTABILITY

HIGH OPACITY

SOFT AND VELVETY TOUCH



## AQUA RANGE COLOURS

### AQUA BASE

#### Where?

SEMI-OPAQUE BASE FOR DARK SUBSTRATES

#### How?

PRINTABLE WITH MESH UP TO  
77 THREADS/cm

#### Why?

EXCELLENT PRINTABILITY

### AQUA COLOURS

#### Where?

OPAQUE SERIES TO BE PRINTED ON DARK  
SUBSTRATES DIRECTLY

#### How?

PRINTABLE WITH MESH UP TO  
77 THREADS/cm

#### Why?

EXCELLENT PRINTABILITY  
HIGH OPACITY  
SOFT TOUCH



# AQUA RANGE

## FASHION EFFECTS

### AQUA GOLD

#### Where?

READY-TO-USE SILVER PRODUCT

#### How?

PRINTABLE WITH MESH UP TO  
55 THREADS/cm

#### Why?

GOOD PRINTABILITY  
PRINTABLE ON LIGHT AND DARK SUBSTRATES  
SOFT TOUCH

### AQUA SILVER

#### Where?

READY-TO-USE SILVER PRODUCT

#### How?

PRINTABLE WITH MESH UP TO 55 THREADS/cm

#### Why?

GOOD PRINTABILITY  
PRINTABLE ON LIGHT AND DARK SUBSTRATES  
SOFT TOUCH



# AQUA RANGE

## FASHION EFFECTS

### AQUA BINDER PG

**Where?**

BINDER FOR POWDERS AND GLITTERS

**How?**

SCREEN MESH DEPENDING ON POWDER  
AND GLITTER SIZE

**Why?**

GOOD PRINTABILITY  
HIGH WASHING RESISTANCE  
SOFT TOUCH

### AQUA PUFF

**Where?**

PUFF BASE FOR TEXTILE PRINTING

**How?**

PRINTABLE WITH MESH UP TO  
55 THREADS/cm

**Why?**

SOFT AND VELVETY PUFF EFFECT



# AQUA AUXILIARIES

## AQUA THINNER

### Retarder / Thinner

It balances the loss in humidity of the ink, because of overheating of the pallets.

It allows to reduce the viscosity of the printing ink, by increasing its printability and stability in the screen, without compromising its opacity.

The maximum use percentage is 5%. This product may be added to all the inks of the series AQUA.

## AQUA ADDITIVE LOW TACK

### Specific additive for the series AQUA

It allows to reduce the surface tack of the printings, without compromising the printability and the opacity of the ink.

AQUA ADDITIVO LOW TACK IS NOT AN ANTI-FOIL ADDITIVE.

The maximum use percentage is 5%. This product may be added to all the inks of the series AQUA.



## COMPATIBLE PIGMENTS

ECOTEX  
P PIGMENTI

20

CONCENTRATED BASES

Water-based pigments with high concentration, for direct printing

**GENERAL FEATURES**

- Phthalate, PVC, formaldehyde and heavy metal free
- Good general fastness
- High concentration and high dyeing power

TEXILAC  
COLORANTI

12

CONCENTRATED BASES

Water-based pigments with high concentration for direct printing

**GENERAL FEATURES**

- Phthalate, PVC, formaldehyde and heavy metal free
- Good general fastness
- High concentration and high dyeing power

ECOTEX  
AMC

10

CONCENTRATED BASES

Water-based pigments. Formula book for the realization of colour references

**GENERAL FEATURES**

- Dedicated formula book for the realization of colour references
- Good general fastness
- Phthalate, PVC, formaldehyde and heavy metal free





# EPTAINKS

## **Epta Inks SpA**

Via A. De Gasperi, 1 - 22070 Luisago (CO), Italy  
Ph. +39 031 9090111 Fax +39 031 920505  
www.eptainks.com

## **Epta Inks SpA**

Via Zamenhof, 12 - 36100 Vicenza, Italy  
Ph. +39 0444 914382 - Fax +39 0444 918196

## **Epta China Chemicals Co., Ltd.**

Building A12, No.5399, Waiqingsong Road  
Qingpu I.Z. - 201700 Shanghai, China  
Ph. +86 21 69211223 - 69211286  
Fax +86 21 69211225

## **Epta Spain S.L.U.**

Can Coll, 15 - naves 22-23 - 08185 Lliçá de Vall  
Barcelona, Spain  
Ph. +34 93 8439217 - Fax +34 93 8439127

## **Epta Inks Türkiye**

Egitim Mah. , Acikgoz Sok. Ogun Is Merkezi No. 2  
Kat 2 D:8, 34722 Hasanpasa - Kadikoy, ISTANBUL  
Ph. 0216 - 3383016 - Fax 0216 3383089

## **Epta India (PVT) Ltd.,**

(A Subsidiary of Epta Inks, SpA., Italy)  
No.8, 5th street, PudhuThottam, Sheriff Colony  
Tiruppur - 641 604, India  
Ph. 0421-2210244,2216988 - @mail: info@eptainks.co.in

## **BE NATURAL, BE FREE!**

Every two seconds a forest area - sizing a football field - is destroyed!

We believe in developing a Sustainable Chemistry as we believe that the respect for the environment is part of our responsibility. With a few simple, everyday efforts you can help us to reduce pollution, consume less energy and water and produce less waste:

- Download our brochures from our website
- Spread the information to your customers through internet and @mail
- Print brochures only if really necessary choosing Recycled Paper

**Do like us: BE NATURAL, BE FREE**